

**SECTION 00912 - ADDENDUM NUMBER 3**

PARTICULARS

1.01 DATE: July 10, 2013

1.02 PROJECT: UNIVERSITY OF SOUTH CAROLINA - Horizon Garage - Classroom Upfit

1.03 PROJECT NUMBER: State Project #H27-Z006, A/E #12029.01

1.04 OWNER: University of South Carolina

1.05 ARCHITECT: GMK Associates, Inc.

TO: PROSPECTIVE BIDDERS

2.01 This Addendum forms a part of the Contract Documents and modifies the Bidding Documents dated May, 2013, and Addendum Numbers 1 and 2 issued June 27, 2013 and July 3, 2013, with amendments and additions noted below.

2.02 Acknowledge receipt of this Addendum in the space provided in the Bid Form. Failure to do so may disqualify the Bidder.

2.03 This Addendum consists of 2 pages and the following attachments:

CHANGES TO THE PROJECT MANUAL

3.01 Section 01500 - TEMPORARY FACILITIES AND CONTROLS

- A. Add Paragraph 1.12D.3 - "**Contractor has no restrictions to work schedule. Prior notification and approval is required when accessing and working in existing electrical room.**"

3.02 Add attached Section 08110 - STEEL DOORS AND FRAMES

3.03 Section 08115 - STEEL DOORS AND FRAMES

- A. Delete in its entirety.

3.04 Section 09650 - RESILIENT FLOORING

- A. Paragraph 2.02A - Change "Type TS rubber, vulcanized thermoset" to "**Type TV, vinyl, thermoplastic**".

3.05 Section 10800 - TOILET, BATH AND LAUNDRY ACCESSORIES

- A. Replace with attached Section 10800.

CHANGES TO THE DRAWINGS

4.01 4.01 Drawing A2.2

- A. Replace with attached Drawing A2.2.

4.02 Drawing A6.0

- A. Elevation 2 - Toilet paper dispenser is dual roll type, per specifications.
- B. Elevation 2A - Trash receptor is Owner Provided, Owner Installed (OPOI).

4.03 Drawing A8.0

A. Replace with attached Drawing A8.0.

4.04 Drawing P2.2

A. Replace with attached Drawing P2.2.

**END OF SECTION**

## SECTION 08110 - STEEL DOORS AND FRAMES

### PART 1 GENERAL

#### 1.01 SECTION INCLUDES

- A. Steel frames for wood doors.
- B. Fire-rated steel doors and frames.
- C. Thermally insulated steel doors.

#### 1.02 RELATED REQUIREMENTS

- A. Section 08800 - Glazing: Glass for doors and borrowed lites.

#### 1.03 REFERENCE STANDARDS

- A. ANSI/ICC A117.1 - American National Standard for Accessible and Usable Buildings and Facilities; International Code Council; 2009.
- B. ANSI A250.8 - SDI-100 Recommended Specifications for Standard Steel Doors and Frames; 2003.
- C. ANSI A250.10 - Test Procedure and Acceptance Criteria for Prime Painted Steel Surfaces for Steel Doors and Frames; 1998 (R2004).
- D. ASTM C1363 - Standard Test Method for Thermal Performance of Building Assemblies by Means of a Hot Box Apparatus; 2011.
- E. BHMA A156.115 - Hardware Preparation in Steel Doors and Steel Frames; 2006.
- F. NAAMM HMMA 840 - Guide Specifications for Installation and Storage of Hollow Metal Doors and Frames; The National Association of Architectural Metal Manufacturers; 2007.
- G. NAAMM HMMA 861 - Guide Specifications for Commercial Hollow Metal Doors and Frames; The National Association of Architectural Metal Manufacturers; 2006.
- H. NFPA 80 - Standard for Fire Doors and Other Opening Protectives; 2010.
- I. NFPA 252 - Standard Methods of Fire Tests of Door Assemblies; National Fire Protection Association; 2012.
- J. UL (BMD) - Building Materials Directory; Underwriters Laboratories Inc.; current edition.
- K. UL 10C - Standard for Positive Pressure Fire Tests of Door Assemblies; Current Edition, Including All Revisions.

#### 1.04 SUBMITTALS

- A. See Section 01300 - Administrative Requirements for submittal procedures.
- B. Product Data: Materials and details of design and construction, hardware locations, reinforcement type and locations, anchorage and fastening methods, and finishes.
- C. Shop Drawings: Details of each opening, showing elevations, glazing, frame profiles, and identifying location of different finishes, if any.
- D. Installation Instructions: Manufacturer's published instructions, including any special installation instructions relating to this project.

- E. Manufacturer's Certificate: Certification that products meet or exceed specified requirements.

#### 1.05 QUALITY ASSURANCE

- A. Manufacturer Qualifications: Provide all products from a single manufacturer who is a member of the Steel Door Institute.
- B. Manufacturer Qualifications: Company specializing in manufacturing the products specified in this section with minimum three years documented experience.
- C. Maintain at the project site a copy of all reference standards dealing with installation.

#### 1.06 DELIVERY, STORAGE, AND HANDLING

- A. Store in accordance with NAAMM HMMA 840.
- B. Protect with resilient packaging; avoid humidity build-up under coverings; prevent corrosion.
- C. Place units on 4 inch high wood sills or in a manner that will prevent rust or damage. Provide 1/4 inch space between doors to promote air circulation.

### PART 2 PRODUCTS

#### 2.01 MANUFACTURERS

- A. Steel Doors and Frames:
1. Assa Abloy Ceco, Curries, or Fleming: [www.assaabloydss.com](http://www.assaabloydss.com).
  2. Curries Mfg., Inc.; [www.curries.com](http://www.curries.com)
  3. D & D Specialties, Inc.
  4. Republic Doors: [www.republicdoor.com](http://www.republicdoor.com).
  5. Steelcraft, an Ingersoll Rand brand: [www.steelcraft.com](http://www.steelcraft.com).
  6. Substitutions: See Section 01600 - Product Requirements.

#### 2.02 DOORS AND FRAMES

- A. Requirements for All Doors and Frames:
1. Accessibility: Comply with ANSI/ICC A117.1.
  2. Hardware Preparation: In accordance with BHMA A156.115, with reinforcement welded in place, in addition to other requirements specified in door grade standard.
  3. Galvanizing for Units in Wet Areas: All components hot-dipped zinc-iron alloy-coated (galvannealed), manufacturer's standard coating thickness.
  4. Finish: Factory primed, for field finishing.
- B. Combined Requirements: If a particular door and frame unit is indicated to comply with more than one type of requirement, comply with all the specified requirements for each type; for instance, an exterior door that is also indicated as being sound-rated must comply with the requirements specified for exterior doors and for sound-rated doors; where two requirements conflict, comply with the most stringent.

#### 2.03 STEEL DOORS

- A. Interior Doors, Fire-Rated:
1. Grade: ANSI A250.8 Level 2, physical performance Level B, Model 1, full flush.
  2. Fire Rating: As indicated on Door and Frame Schedule, tested in accordance with UL 10C ("positive pressure").
    - a. Provide units listed and labeled by UL.

- b. Attach fire rating label to each fire rated unit.
- 3. Texture: Smooth faces.
- 4. Finish: Factory primed, for field finishing.

#### 2.04 STEEL FRAMES

- A. General:
  - 1. Comply with the requirements of grade specified for corresponding \_\_\_\_\_
    - a. Frames for Wood Doors: Comply with frame requirements specified in ANSI A250.8 for Level 1, 18 gage
  - 2. Finish: Factory primed, for field finishing.
- B. Interior Door Frames, Non-Fire-Rated: Knock-down type.

#### 2.05 ACCESSORY MATERIALS

- A. Glazing: As specified in Section 08800, factory installed.
- B. Astragals for Double Doors: Specified in Section 08710.
- C. Silencers: Resilient rubber, fitted into drilled hole; 3 on strike side of single door, 3 on center mullion of pairs, and 2 on head of pairs without center mullions.
- D. Temporary Frame Spreaders: Provide for all factory- or shop-assembled frames.

#### 2.06 FINISH MATERIALS

- A. Primer: Rust-inhibiting, complying with ANSI A250.10, door manufacturer's standard.

### PART 3 EXECUTION

#### 3.01 EXAMINATION

- A. Verify that project conditions are suitable before beginning installation of frames.
- B. Verify that opening sizes and tolerances are acceptable.

#### 3.02 INSTALLATION

- A. Install in accordance with SDI 105.
- B. Install doors plumb and in true alignment and fasten to achieve the maximum operational effectiveness and appearance of the unit.
- C. In addition, install fire rated units in accordance with SDI 100 and NFPA 80 whichever is more restrictive.
- D. Coordinate frame anchor placement with wall construction.
- E. Coordinate installation of hardware.
- F. Coordinate installation of glazing.

#### 3.03 TOLERANCES

- A. Clearances Between Door and Frame: As specified in ANSI A250.8.
- B. Maximum Diagonal Distortion: 1/16 in measured with straight edge, corner to corner.

#### 3.04 ADJUSTING AND CLEAN

- A. Adjust for smooth and balanced door movement.
- B. Clean and restore soiled surfaces. Remove scraps and debris, and leave site and a clean condition.

**END OF SECTION**

## SECTION 10800 - TOILET, BATH, AND LAUNDRY ACCESSORIES

### PART 1 GENERAL

#### 1.01 SECTION INCLUDES

- A. Accessories for toilet rooms.
- B. Grab bars.
- C. Baby Changing Table.

#### 1.02 REFERENCE STANDARDS

- A. ASTM A269 - Standard Specification for Seamless and Welded Austenitic Stainless Steel Tubing for General Service; 2010.
- B. ASTM A666 - Standard Specification for Annealed or Cold-Worked Austenitic Stainless Steel Sheet, Strip, Plate, and Flat Bar; 2010.
- C. ASTM C1036 - Standard Specification for Flat Glass; 2011e1.
- D. ASTM C1503 - Standard Specification for Silvered Flat Glass Mirror; 2008.
- E. ASTM F2285 - Standard Consumer Safety Performance Specification for Diaper Changing Tables for Commercial Use; 2004 (Reapproved 2010).

#### 1.03 SUBMITTALS

- A. See Section 01300 - Administrative Requirements, for submittal procedures.
- B. Product Data: Provide data on accessories describing size, finish, details of function, attachment methods.
- C. Schedule: Submit complete schedule of accessories indicated type and location where each item is to be installed in accordance with groups specified.
- D. Setting Drawings: Provide setting drawings, templates, instructions, and directions for installation of anchorage devices and cut-out requirements in other work.
- E. Manufacturer's Installation Instructions: Indicate special procedures and conditions requiring special attention.

#### 1.04 QUALITY ASSURANCE

- A. Inserts and Anchorages: Furnish inserts and anchoring devices which must be set in concrete or built into masonry; coordinate delivery with other work to avoid delay.
- B. Accessory Locations: Coordinate accessory locations with other work to avoid interference and to assure proper operation and servicing of accessory units.

#### 1.05 DELIVERY, STORAGE AND HANDLING

- A. Deliver items in manufacturer's original unopened protective packages and store in these packages so as to prevent physical damage, soiling or wetting.
- B. Handle accessories so as to prevent damage to finished surfaces and install with manufacturer's protective covers in tact, as much as practical.
- C. Maintain protective covers until final cleaning. Upon removal clean exposed surfaces as

recommended by manufacturer.

## PART 2 PRODUCTS

### 2.01 MANUFACTURERS

- A. Products listed are made by Bobrick Washroom Equipment, Inc.
- B. Other Acceptable Manufacturers:
  - 1. American Specialties, Inc: [www.americanspecialties.com](http://www.americanspecialties.com).
  - 2. Bradley Corporation: [www.bradleycorp.com](http://www.bradleycorp.com).
  - 3. Substitutions: Section 01600 - Product Requirements.
- C. All items of each type to be made by the same manufacturer.

### 2.02 MATERIALS

- A. Accessories - General: Shop assembled, free of dents and scratches and packaged complete with anchors and fittings, steel anchor plates, adapters, and anchor components for installation.
  - 1. Grind welded joints smooth.
  - 2. Fabricate units made of metal sheet of seamless sheets, with flat surfaces.
- B. Keys: Provide 3 keys for each accessory to Owner; master key all lockable accessories.
- C. Stainless Steel Sheet: ASTM A666, Type 304.
- D. Stainless Steel Tubing: ASTM A269, Type 304 or 316.
- E. Sheet Steel: Cold-rolled, commercial quality ASTM A 366, 20-gage (.040") minimum, unless otherwise indicated. Surface preparation and metal pretreatment as required for applied finish.
- F. Mirror Glass: Float glass, ASTM C1036 Type I, Class 1, Quality Q2, with silvering, protective and physical characteristics complying with ASTM C1503.
- G. Fasteners, Screws, and Bolts: Hot dip galvanized, tamper-proof.
- H. Expansion Shields: Fiber, lead, or rubber as recommended by accessory manufacturer for component and substrate.

### 2.03 FINISHES

- A. Stainless Steel: No. 4 satin brushed finish, unless otherwise noted.
- B. Back paint components where contact is made with building finishes to prevent electrolysis.

### 2.04 TOILET ROOM ACCESSORIES

- A. Toilet Paper Dispenser: Double roll, surface mounted bracket type, satin finished cast aluminum brackets, eccentric-shaped plastic spindle for 1/2 revolution delivery designed to prevent theft of tissue roll.
  - 1. Product: B-2740 manufactured by Bobrick Washroom Equipment, Inc.
- B. Paper Towel Dispenser: Folded paper type, stainless steel, semi-recessed, with viewing slots on sides as refill indicator and tumbler lock.
  - 1. Capacity: 400 C-fold or 525 multifold minimum.
  - 2. Product: B-262 manufactured by Bobrick Washroom Equipment, Inc.
- C. Soap Dispenser: Wall mounted (by Owner); Contractor installed.



- D. Mirrors: Stainless steel framed, 6 mm thick float glass mirror.
  - 1. Size: As scheduled.
  - 2. Frame: 0.05 inch angle shapes, with mitered and welded and ground corners, and tamperproof hanging system; No.4 finish.
  - 3. Backing: Full-mirror sized, minimum 0.03 inch galvanized steel sheet and nonabsorptive filler material.
  - 4. Product: B-165 manufactured by Bobrick Washroom Equipment, Inc.
- E. Grab Bars: Stainless steel, 1-1/2 inches outside diameter, minimum 0.05 inch wall thickness, nonslip grasping surface finish, concealed flange mounting; 1-1/2 inches clearance between wall and inside of grab bar.
  - 1. Length and configuration: As indicated on schedule.
  - 2. Product: B-6206 manufactured by Bobrick Washroom Equipment, Inc.
- F. Sanitary Napkin Disposal Unit: Stainless steel, surface-mounted, self-closing door, locking bottom panel with full-length stainless steel piano-type hinge, removable receptacle.
  - 1. Product: B-353 manufactured by Bobrick Washroom Equipment, Inc.
- G. Diaper Changing Station: Wall-mounted folding diaper changing station for use in commercial toilet facilities, meeting or exceeding ASTM F2285. Rooms 206 and 207 only.
  - 1. Style: Horizontal.
  - 2. Mounting: Surface.
  - 3. Manufacturers:
    - a. American Specialties, Inc: [www.americanspecialties.com](http://www.americanspecialties.com).
    - b. Bradley Corporation: [www.bradleycorp.com](http://www.bradleycorp.com).
    - c. Koala Kare Products: [www.koalabear.com](http://www.koalabear.com).

### PART 3 EXECUTION

#### 3.01 EXAMINATION

- A. Verify existing conditions before starting work.
- B. Verify exact location of accessories for installation.
- C. Verify that field measurements are as indicated on drawings.
- D. See Section 09260 for installation of blocking, reinforcing plates, and concealed anchors in walls, and ceilings.

#### 3.02 PREPARATION

- A. Deliver inserts and rough-in frames to site for timely installation.
- B. Provide templates and rough-in measurements as required.

#### 3.03 INSTALLATION

- A. Install accessories in accordance with manufacturers' instructions.
- B. Install plumb and level, securely and rigidly anchored to substrate.
- C. Mounting Heights and Locations: As required by accessibility regulations and as indicated on drawings

#### 3.04 ADJUSTING AND CLEANING

- A. Adjust toilet accessories for proper operation and verify that mechanisms function smoothly.  
Replace damaged or defective items.
- B. Clean and polish all exposed surfaces after removing temporary labels and protective coatings.

### 3.05 SCHEDULE

- A. General: For the purpose of identifying the types of accessories and the expected minimum quality intended for this project
- B. Accessory Schedule
  - 1. Group A
    - a. (1) Mirror
    - b. (1) Soap Dispenser.
    - c. (1) Toilet Paper Dispenser.
    - d. (1) 18" Grab Bar (Vertical)
    - e. (1) 36" Grab Bar (Horizontal).
    - f. (1) 42" Grab Bar (Horizontal).
    - g. (1) Paper Towel Dispenser.

**END OF SECTION**

consultants



owner  
**UNIVERSITY OF SOUTH CAROLINA**  
USC CAMPUS PLANNING AND CONSTRUCTION  
743 GREENE STREET  
COLUMBIA, SOUTH CAROLINA 29208

project name  
**USC HORIZON GARAGE SHELL UPFIT**

A/E project number  
**12029.01**

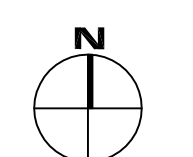
seals/signature

issued for  
**CONSTRUCTION DOCUMENTS**

date  
**SEPTEMBER 18, 2012**

number	item	date
U	UPDATE CHANGES	3/5/2013
A	UPDATE CHANGES	5/7/2013
A	ADDENDUM 3	7/11/2013

key plan

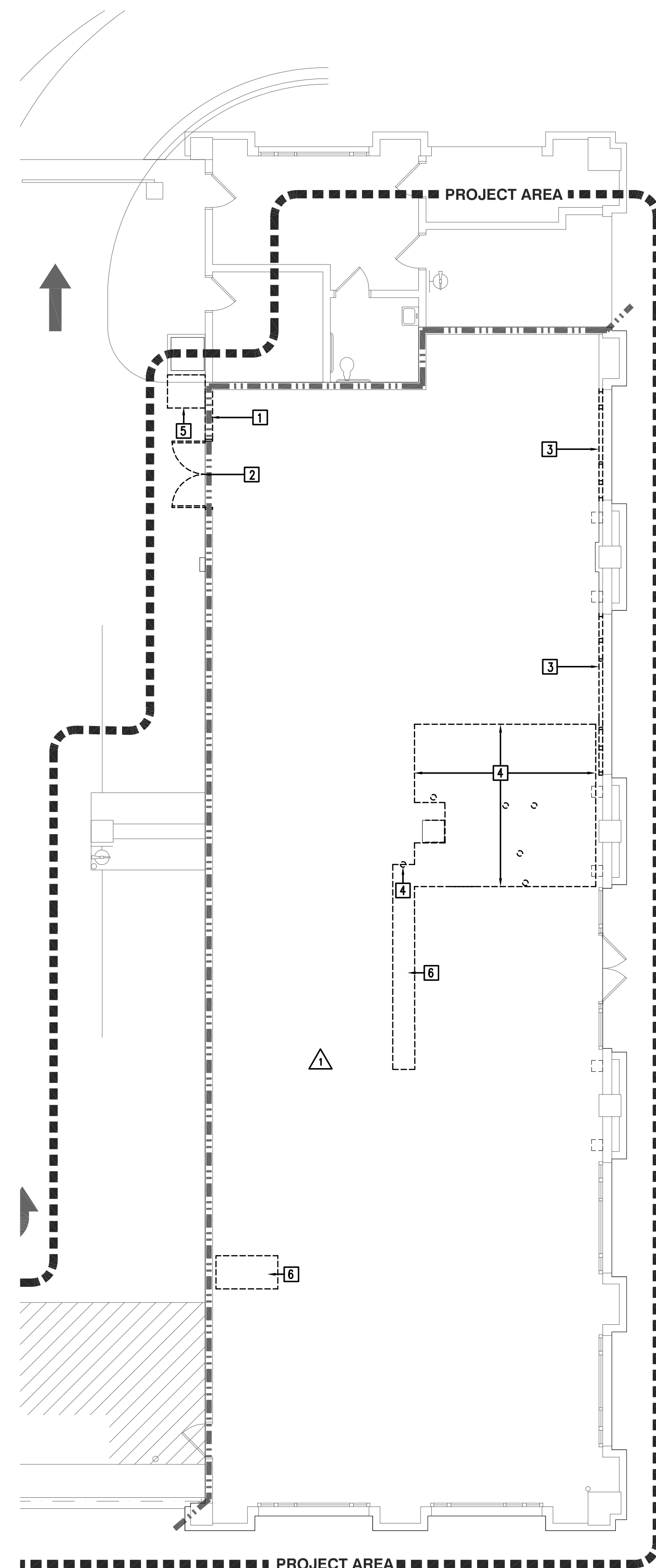


sheet title  
**PARTIAL DEMOLITION PLAN, PARTIAL SECOND FLOOR PLAN, AND PARTIAL REFLECTED CEILING PLAN AND SLAB PATCH DETAIL**

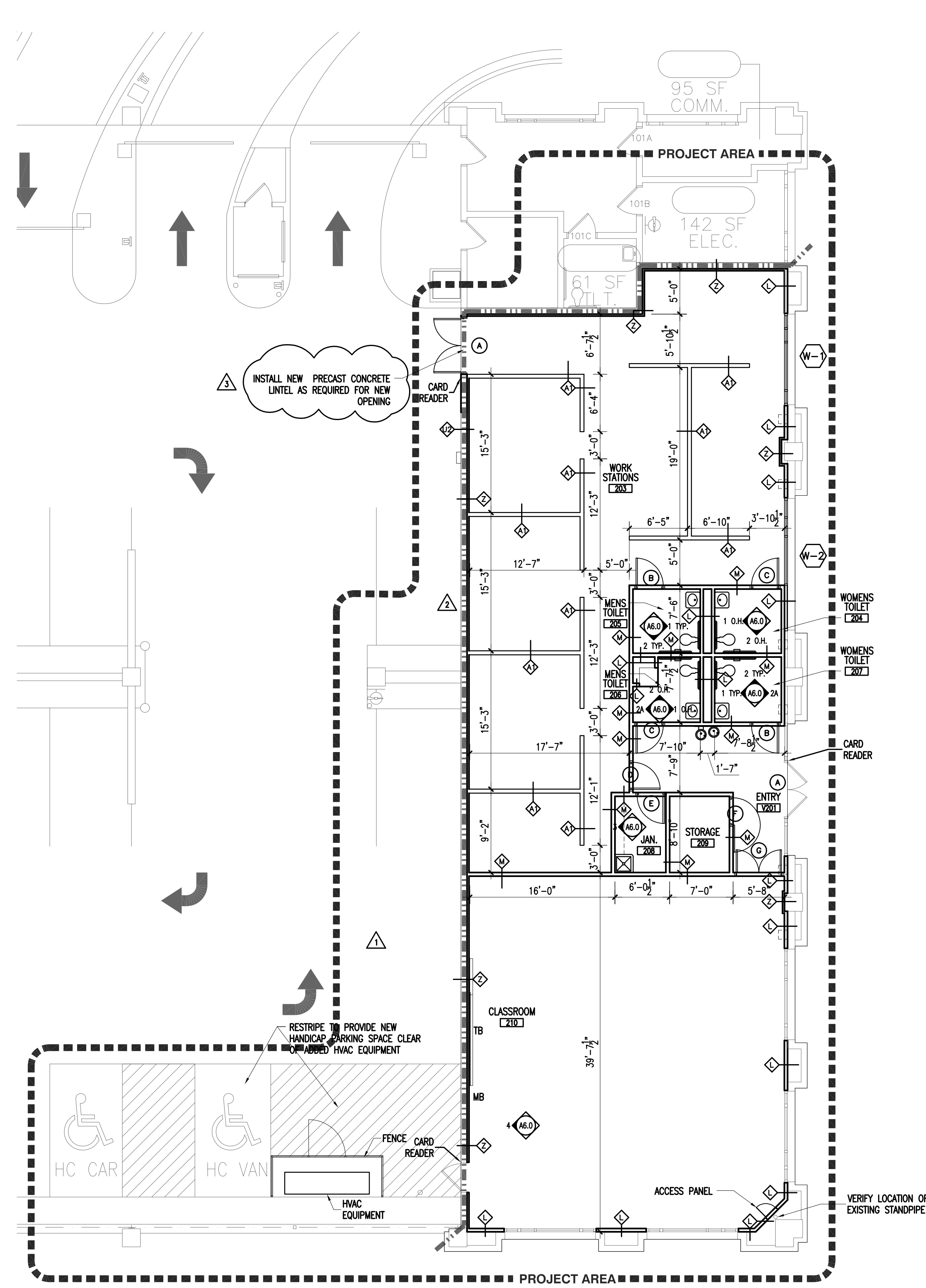
sheet number

**A2.2**

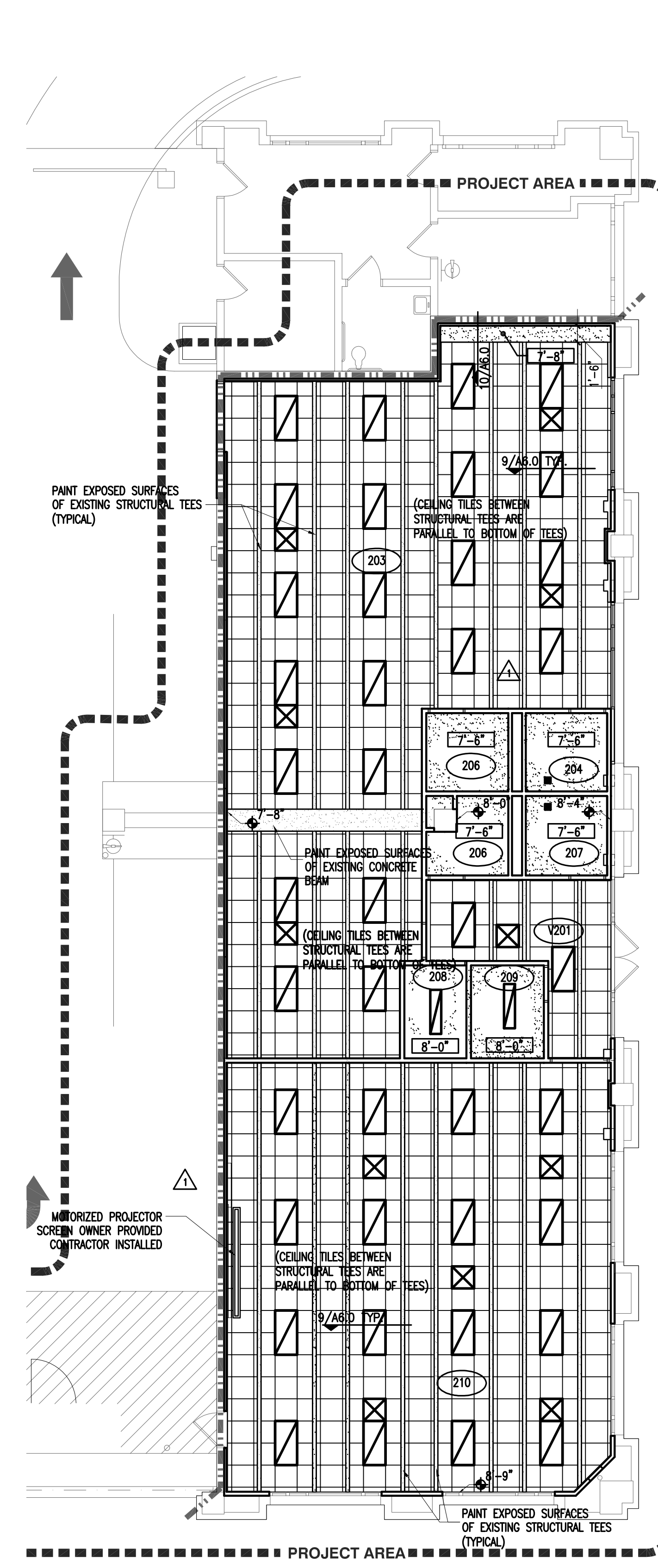
drawn by MHC  
checked by DJR



**1 PARTIAL DEMOLITION PLAN**  
1/8"=1'-0"



**2 PARTIAL SECOND FLOOR PLAN**  
1/8"=1'-0"



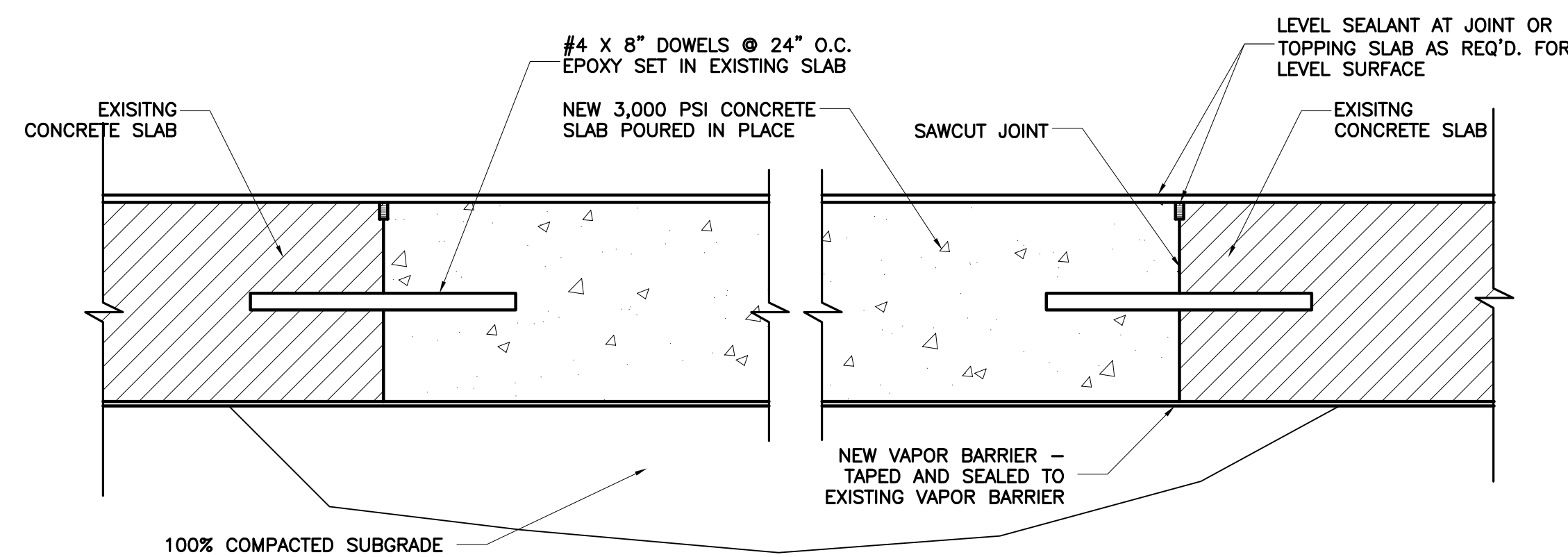
**3 PARTIAL REFLECTED CEILING PLAN**  
1/8"=1'-0"

**GENERAL DEMOLITION NOTES**

1. CREATE A CLEAN CUT AT WALL BEING DEMOLISHED AND BUILDING TO REMAIN. HAND DEMOLISH TO EXTENT NECESSARY TO PROTECT INTEGRITY OF EXISTING WALLS TO REMAIN. DO NOT DEMOLISH EXISTING LOAD BEARING WALLS.
2. INTERIOR FINISHES, MATERIALS, FURNITURE, EQUIPMENT, ETC. IN BUILDINGS TO REMAIN SHALL BE PROTECTED AS NECESSARY TO ELIMINATE POSSIBILITY OF MOISTURE, DUST, DEBRIS DAMAGE. COVER AND PROTECT AS NECESSARY. TEMPORARY CONSTRUCTION BARRIERS SHALL BE PROVIDED BETWEEN THE EXISTING AND THE NEW CONSTRUCTION AT DEMOLITION AREAS.
3. ALL DEMOLITION SHALL BE PERFORMED WITH "DUE CARE AND DILIGENCE" AS TO PREVENT THE ARBITRARY DESTRUCTION OR INTERRUPTION OF CONCEALED UTILITIES WHICH ARE INTENDED TO REMAIN IN USE AND THE ROUTING OF WHICH COULD NOT BE PREDETERMINED UNTIL DEMOLITION WAS STARTED. ALL SUCH DISCOVERIES OF UTILITIES DURING THE DEMOLITION PROCESS WHICH ARE IN A DIFFERENT LOCATION FROM THAT INDICATED, CHANGE DIRECTION FROM FLOOR-TO-FLOOR, ETC., OR ARE UNIDENTIFIED, SHALL BE REPORTED TO THE ARCHITECT BEFORE REMOVAL OR DISTURBANCE.
4. ALL NEW WORK SHALL CONFORM WITH ALL LOCAL AND FEDERAL (INCLUDING ADA) AGENCIES HAVING JURISDICTION.
5. ANY DAMAGE TO EXISTING CONDITIONS CAUSED BY DEMOLITION AND/OR NEW WORK SHALL BE REPAIRED AS DETAILED, OR WHERE NO DETAIL IS SHOWN, RESTORED BACK TO ITS ORIGINAL FINISHED CONDITION, BY THE CONTRACTOR RESPONSIBLE FOR THE DAMAGE.
6. ALL HOLES MADE IN EXISTING WALLS OR FLOORS OR MADE BY THE REMOVAL OF ANY EQUIPMENT OR FIXTURES, SHALL BE PATCHED TO MATCH EXISTING. INSTALL NEW MATERIAL FLUSH WITH EXISTING ON BOTH SIDES.
7. EXISTING WALLS, CEILINGS, CASEWORK, AND FIXTURES SHALL REMAIN UNDISTURBED UNLESS OTHERWISE NOTED. EXISTING CEILING TILES THAT ARE DAMAGED SHALL BE REPLACED.
8. REFER TO PLUMBING, MECHANICAL, AND ELECTRICAL FOR DEMOLITION OF UTILITIES, EQUIPMENT, OR HVAC IN THESE AREAS. REROUTE AS NECESSARY AND MAINTAIN EXISTING ELECTRICAL AND UTILITY CONNECTIONS AS NECESSARY. PATCH FINISHES OR ADD NEW FINISHES AS REQUIRED.
9. NOTIFY THE ARCHITECT IMMEDIATELY UPON DISCOVERY OF EXISTING CONDITIONS THAT ARE CONTRARY TO THOSE REPRESENTED WITHIN THE DRAWINGS.
10. PROVIDE TEMPORARY SUPPORT AND STABILIZE ANY PARTITIONS THAT BECOME UNBRACED DUE TO SELECTIVE OR PARTIAL DEMOLITION.
11. FILL AND/OR GRIND FLOORS AT REMOVED PARTITIONS AS REQUIRED TO PROVIDE SMOOTH TRANSITION, SLOPE NOT TO EXCEED 1/16" PER FOOT.

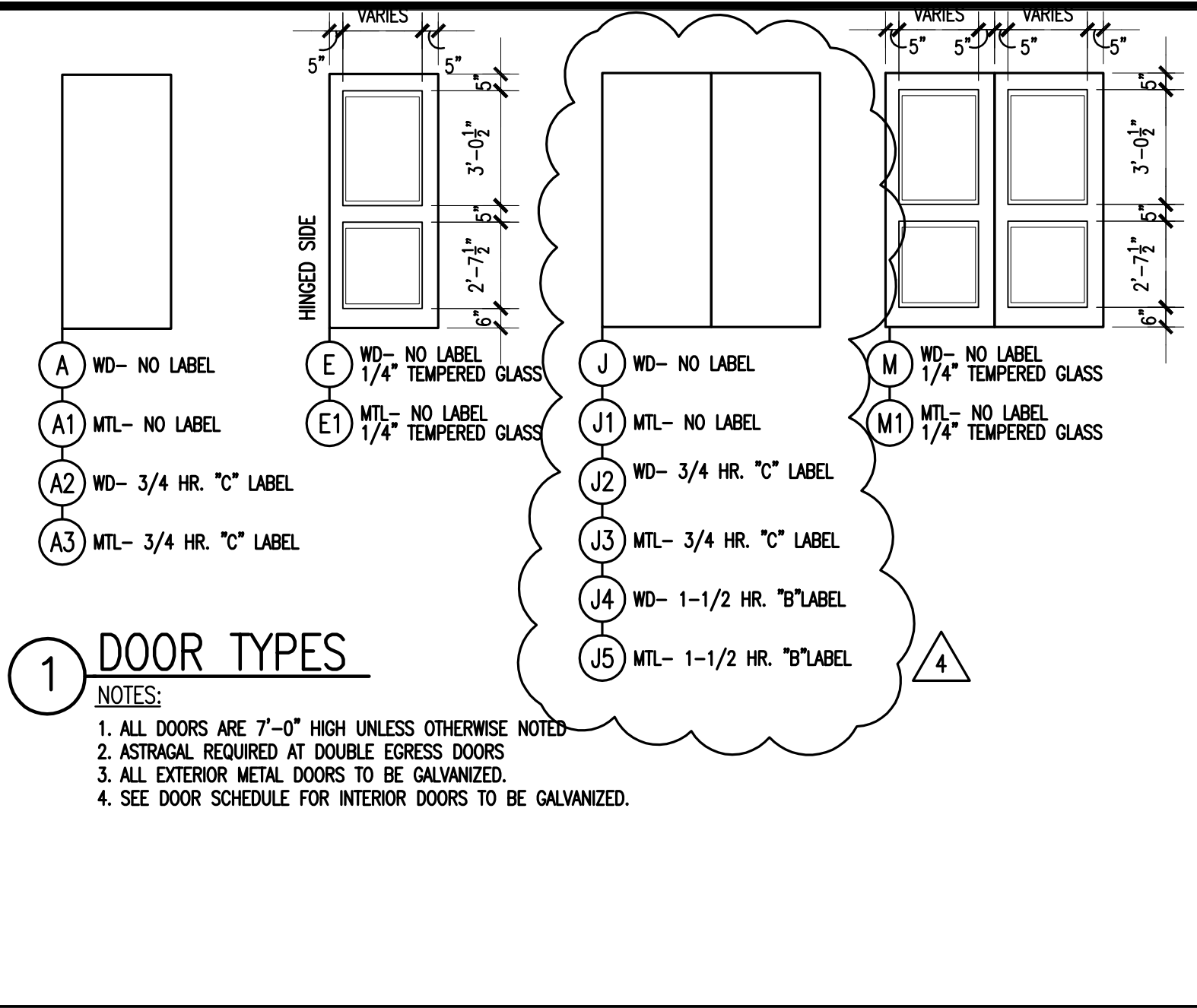
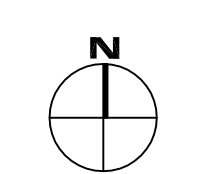
**KEYED DEMOLITION NOTES**

1. REMOVE EXISTING PARTITIONS TO THE EXTENTS INDICATED.
  2. REMOVE EXISTING DOOR AND FRAME AND MASONRY LINTEL. SHORE EXISTING MASONRY WALL AS REQUIRED FOR INSTALLATION OF NEW PRECAST CONCRETE LINTEL.
  3. REMOVE THE EXISTING WINDOW UNIT.
  4. GENERAL AREA OF PIT AND TRENCH EXCAVATION. CONTRACTOR IS TO VERIFY ACTUAL LOCATION OF EXCAVATION. REMOVE CONCRETE SLAB AND SUBSURFACE AS NECESSARY FOR NEW CONSTRUCTION. REFER TO PLUMBING DRAWINGS FOR DETAILS.
  5. REMOVE CONCRETE PLATFORM TO THE EXTENTS INDICATED.
  6. GENERAL AREA OF PIT AND TRENCH EXCAVATION. CONTRACTOR IS TO VERIFY ACTUAL LOCATION OF EXCAVATION. REMOVE CONCRETE SLAB AND SUBSURFACE AS NECESSARY FOR NEW CONSTRUCTION. REFER TO ELECTRICAL DRAWINGS FOR DETAILS.
- DASHED LINES INDICATE WALLS TO BE DEMOLISHED.

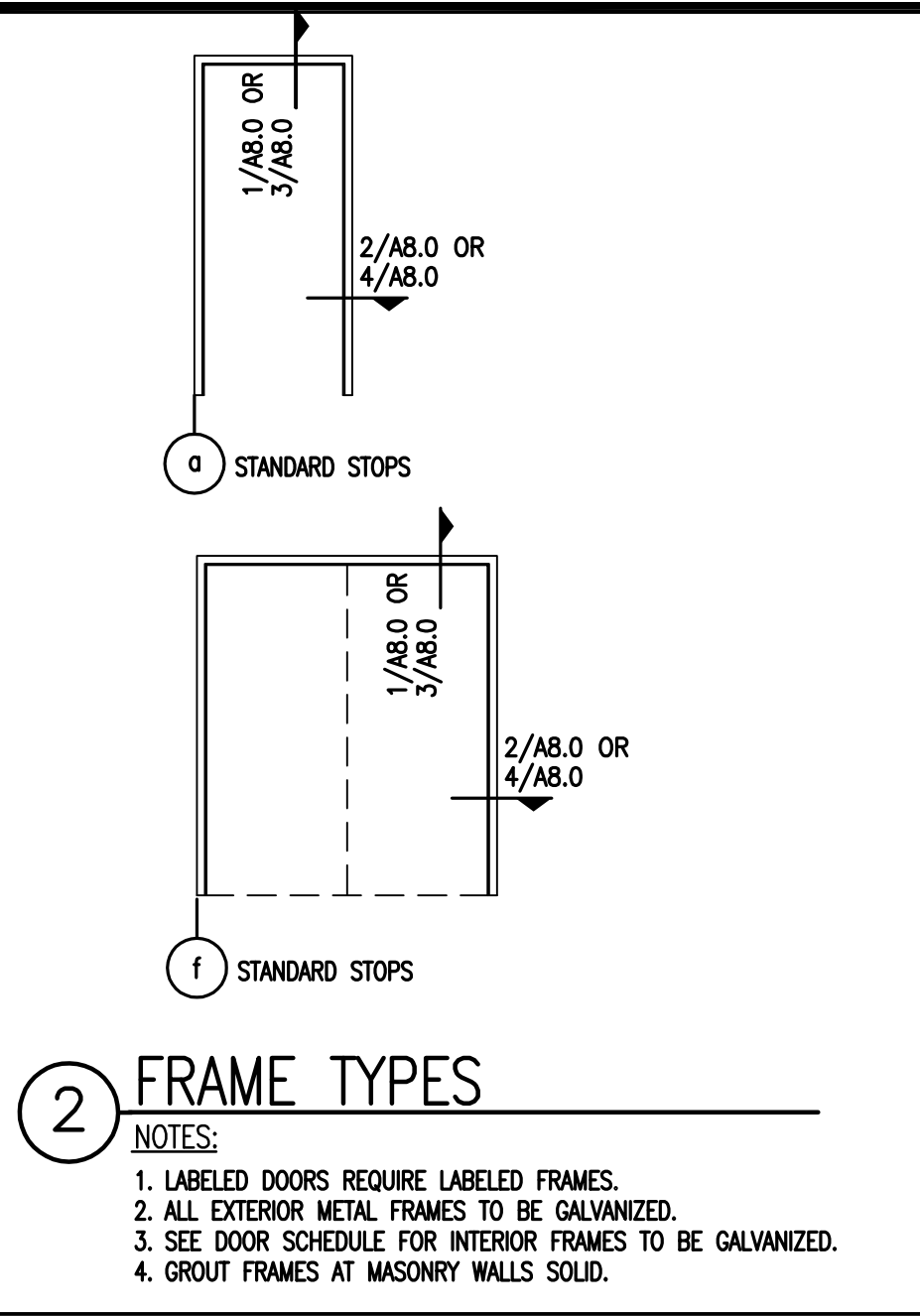


**4 TYPICAL SLAB TRENCH/FLOOR PATCH DETAIL**  
3/8"=1'-0"

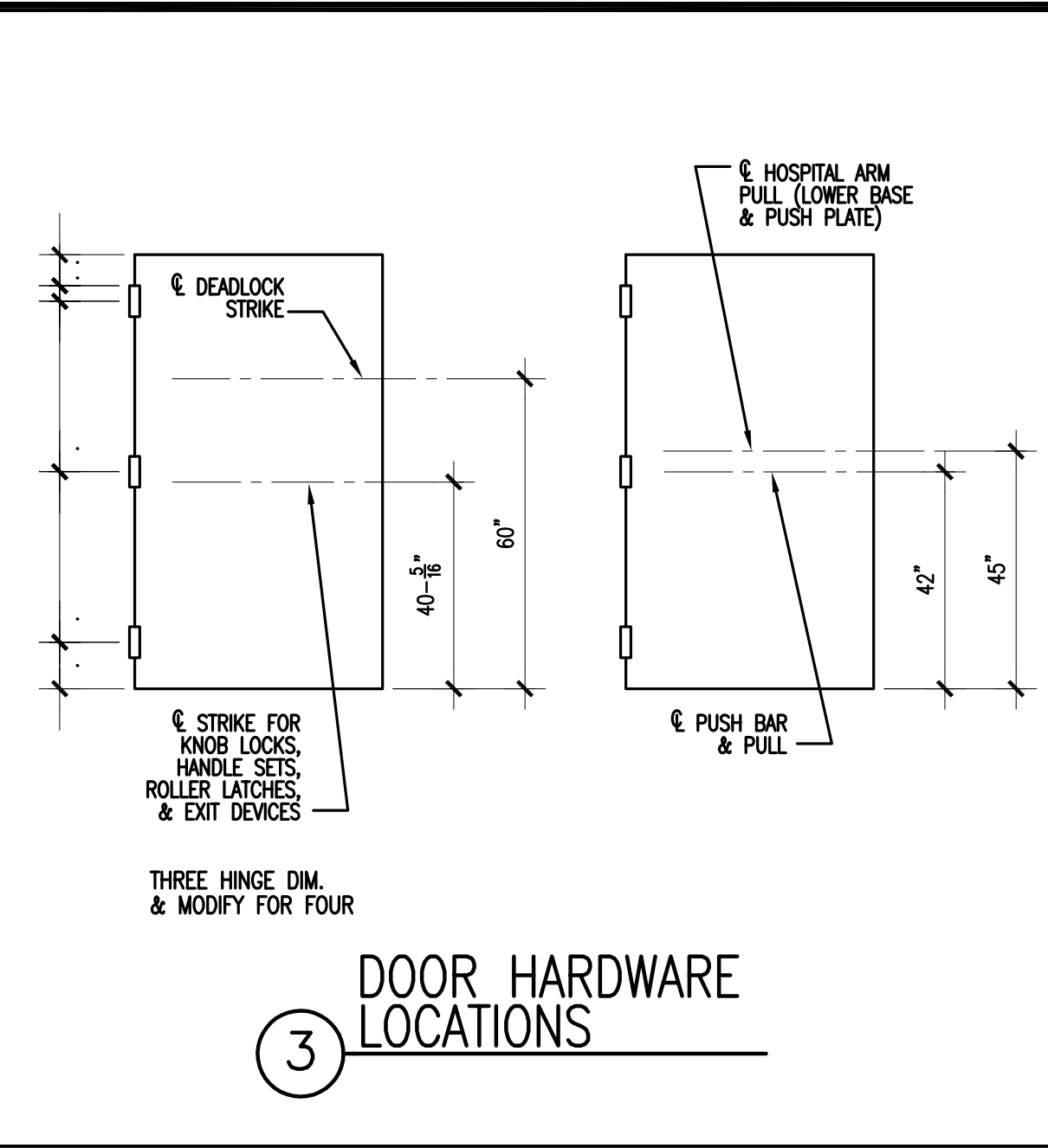
number	item	date
△	UPDATE CHANGES	3/5/2013
△	UPDATE CHANGES	5/7/2013
△	ADDENDUM 2	6/28/2013
△	ADDENDUM 3	7/10/2013



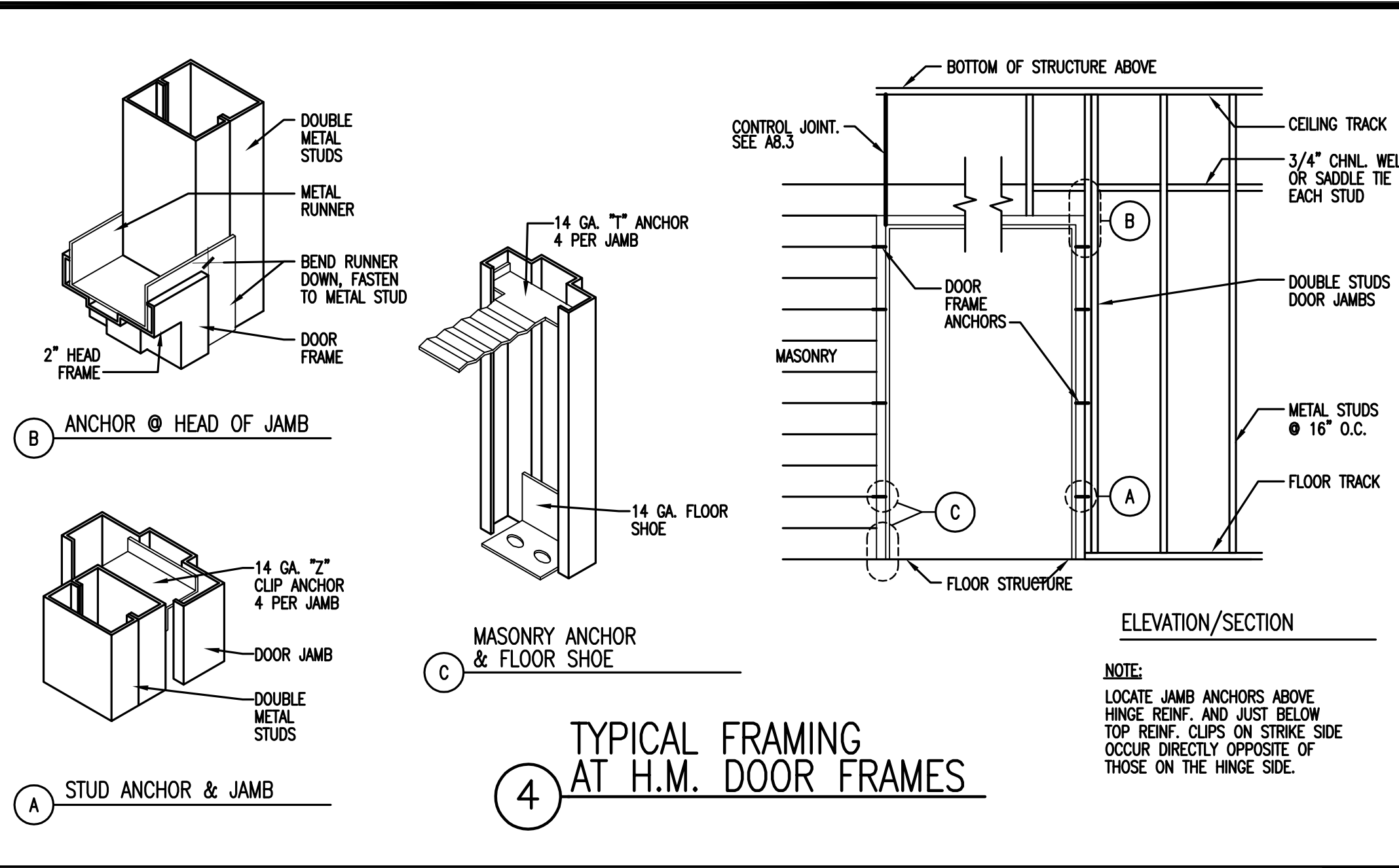
**1 DOOR TYPES**  
NOTES:  
1. ALL DOORS ARE 7'-0" HIGH UNLESS OTHERWISE NOTED.  
2. ASTRIKAL REQUIRED AT DOUBLE GROSS DOOR.  
3. ALL EXTERIOR METAL DOORS TO BE GALVANIZED.  
4. SEE DOOR SCHEDULE FOR INTERIOR DOORS TO BE GALVANIZED.



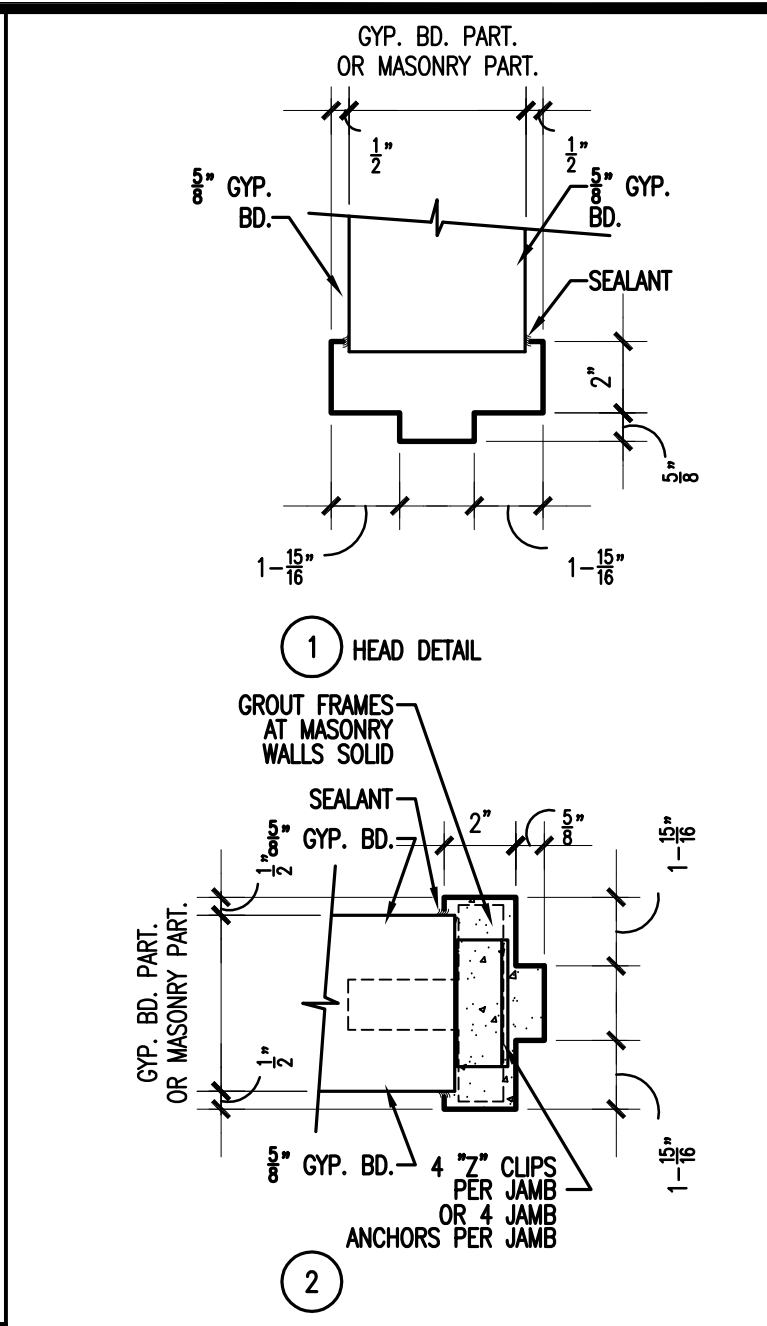
**2 FRAME TYPES**  
NOTES:  
1. LABELED DOORS REQUIRE LABELED FRAMES.  
2. ALL EXTERIOR METAL FRAMES TO BE GALVANIZED.  
3. SEE DOOR SCHEDULE FOR INTERIOR FRAMES TO BE GALVANIZED.  
4. GROUT FRAMES AT MASONRY WALLS SOLID.



**3 DOOR HARDWARE LOCATIONS**  
THREE HINGE DIM. & MODIFY FOR FOUR



**4 TYPICAL FRAMING AT H.M. DOOR FRAMES**  
NOTE: LOCATE JAMB ANCHORS ABOVE HINGE REEF AND JUST BELOW TOP REEF. CLIPS ON STRIKE SIDE OCCUR DIRECTLY OPPOSITE OF THOSE ON THE HINGE SIDE.



**5 HEAD/JAMB DETAILS**  
NOTE: GROUT ALL FRAMES SOLID.

**6 GENERAL NOTES**  
1. THIS DRAWING IS A COMPREHENSIVE MASTER SCHEDULE / DETAIL SHEET. NOT ALL ITEMS SHOWN ON THIS DRAWING ARE USED ON THIS PROJECT. PLEASE REFER TO INDIVIDUAL DRAWINGS FOR SPECIFIC ITEMS USED.

ROOM NUMBER	ROOM NAME	FLOOR		BASE	WALLS		CEILING		REMARKS
		FINISH	ACCENT		FINISH	ACCENT	FINISH	ACCENT	
V201	ENTRY	VT	-	RB	PNT	-	ACT	-	-
203	WORK STATIONS	CPT	-	RB	PNT	-	ACT	-	-
204	WOMENS TOILET	VT	-	RB	PNT	-	GYP	-	-
205	MENS TOILET	VT	-	RB	PNT	-	GYP	-	-
206	MENS TOILET	VT	-	RB	PNT	-	GYP	-	-
207	WOMENS TOILET	VT	-	RB	PNT	-	GYP	-	-
208	JANITOR	VT	-	RB	PNT	-	ACT	-	-
209	STORAGE	CPT	-	RB	PNT	-	ACT	-	-
210	CLASSROOM	CPT	-	RB	PNT	-	ACT	-	-

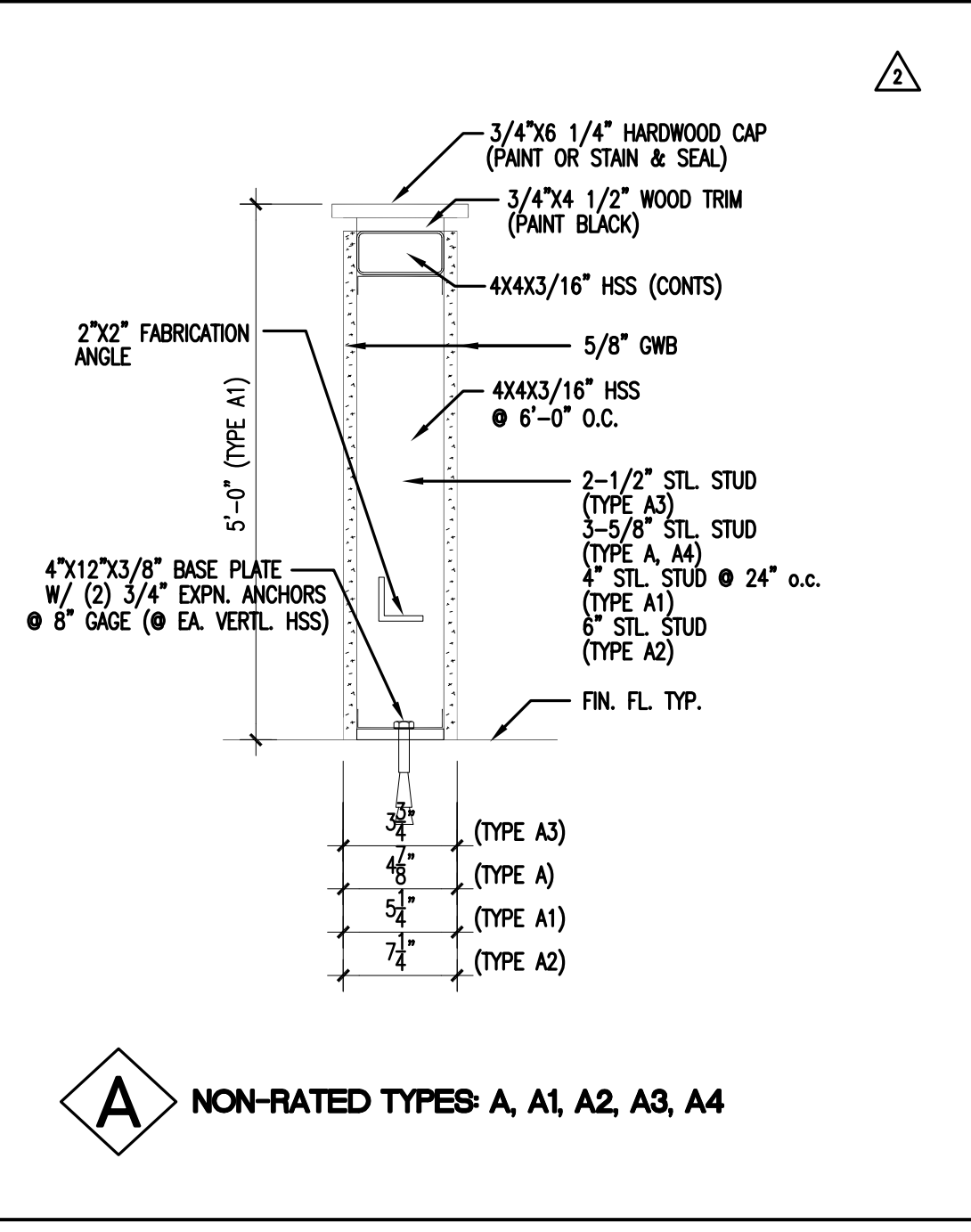
**FINISH LEGEND:**  
RB = RUBBER BASE  
PNT = PAINT  
VT = VINYL TILE  
CPT = CARPET  
GYP = GYPSUM BOARD

**FINISH SCHEDULE NOTES:**  
1. ALL ROOMS WITH ACT CEILING REFER TO SPECIFICATION SECTION 08511 SUSPENDED ACoustICAL CEILINGS FOR TYPE OF CEILING AND SUSPENSION SYSTEM TO BE USED IN EACH SPACE.  
2. PAINT ALL EXPOSED SURFACES OF EXISTING CONCRETE COLUMNS, TEES AND BEAMS.

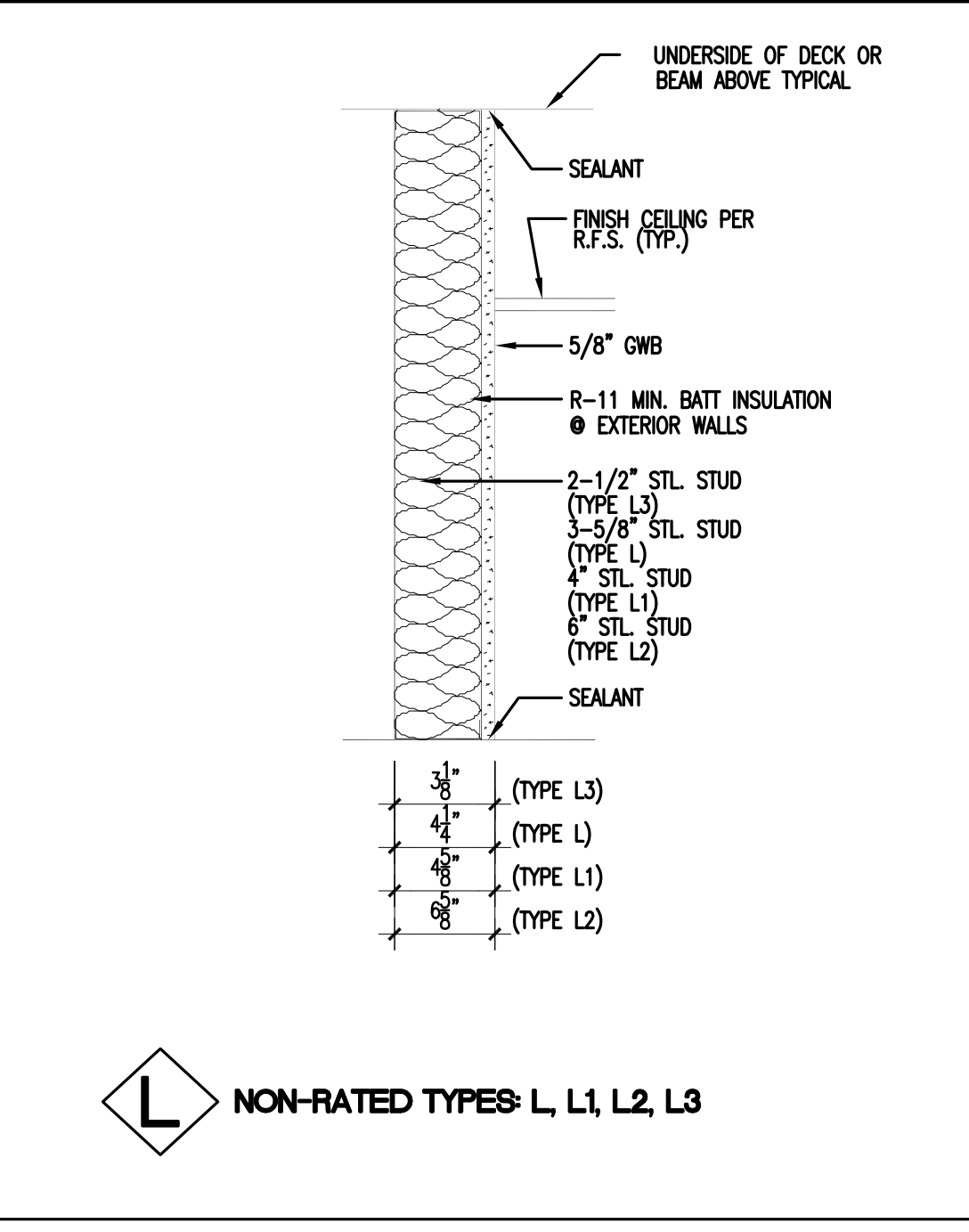
**FINISHES:**  
1. CARPET:  
J+J INVISION BROADLOOM  
STYLE: IMPACT 6551  
COLOR: 1452 BLEND  
2. VCI:  
ARMSTRONG 12x12 TILE  
STYLE: IMPERIAL TEXTURE STANDARD EXCELON  
COLOR: S1904 STERLING  
3. WALL BASE:  
JOHNSONVILLE TRADITIONAL, RUBBER/VINYL, 4"  
COLOR: 63 BURNT UMBER  
4. PAINT:  
SHERWIN WILLIAMS  
CEILING: SW7007 CEILING BRIGHT WHITE - EGGSHELL  
WALLS: SW7682 EVENING SHADOW - EGGSHELL  
TRIM: SW7069 IRON ORE - SEMI-GLOSS  
DOORS: STAINED (SUBMIT SAMPLES TO USC FOR APPROVAL)

ROOM NAME	DOOR NUMBER	DOOR ELEV	DOOR SIZE	FRAME ELEV	HWDR SET	REMARKS
ENTRY	V201A	EXIST	EXISTING	EX	CRES	EXISTING DOOR. ADD ELECTRIC STRIKE & CARD READER
ENTRY	V201B	A	3'-0" X 7'-0"	α	T02	-
ENTRY	V201C	A	3'-0" X 7'-0"	α	T02	-
ENTRY	V201D	E	3'-0" X 7'-0"	α	O03	ELECTRIC STRIKE & CARD READER
ENTRY	V201E	A	3'-0" X 7'-0"	α	S01	-
ENTRY	V201F	A	3'-0" X 7'-0"	α	S02	-
ENTRY	V201G	M	5'-0" X 7'-0"	f	O04	ELECTRIC STRIKE & CARD READER
CLASSROOM	210	EXIST	EXISTING	EX	CRES	EXISTING DOOR. ADD ELECTRIC STRIKE & CARD READER
WORK STATIONS	203A	J5	PR 3'-0" X 7'-0"	f	CRES	REUSE EXISTING HWDR. ADD ELECTRIC STRIKE & CARD READER
WORK STATIONS	203B	A	3'-0" X 7'-0"	α	T02	-
WORK STATIONS	203C	A	3'-0" X 7'-0"	α	T01	-

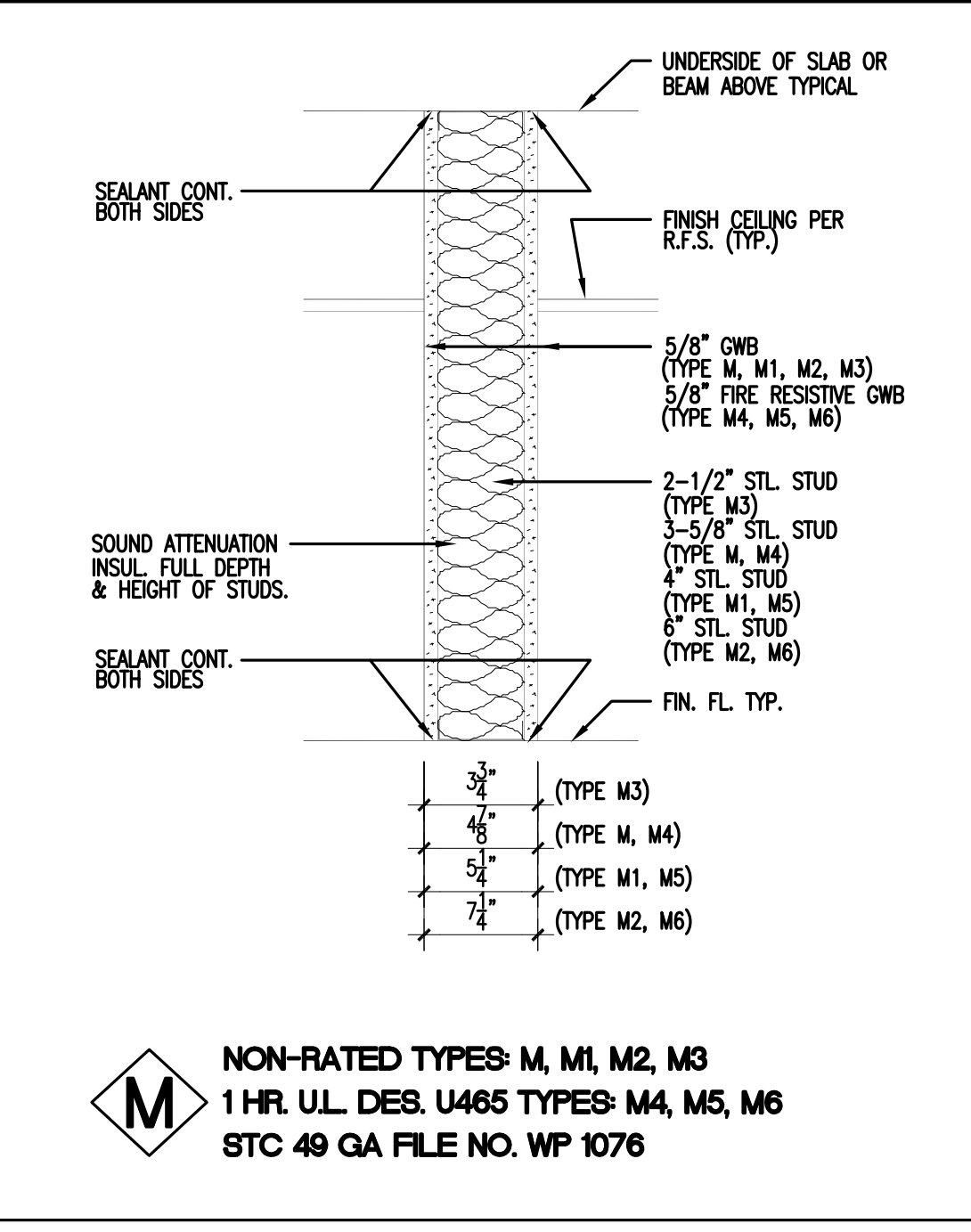
**GENERAL NOTES:**  
1. SEE SPECIFICATION SECTION 08710 FOR HARDWARE SETS FOR EACH DOOR.  
2. CONTRACTOR IS TO MODIFY DOOR FRAMES AS REQUIRED TO INSTALL ELECTRIC STRIKE AND CONTACTS.



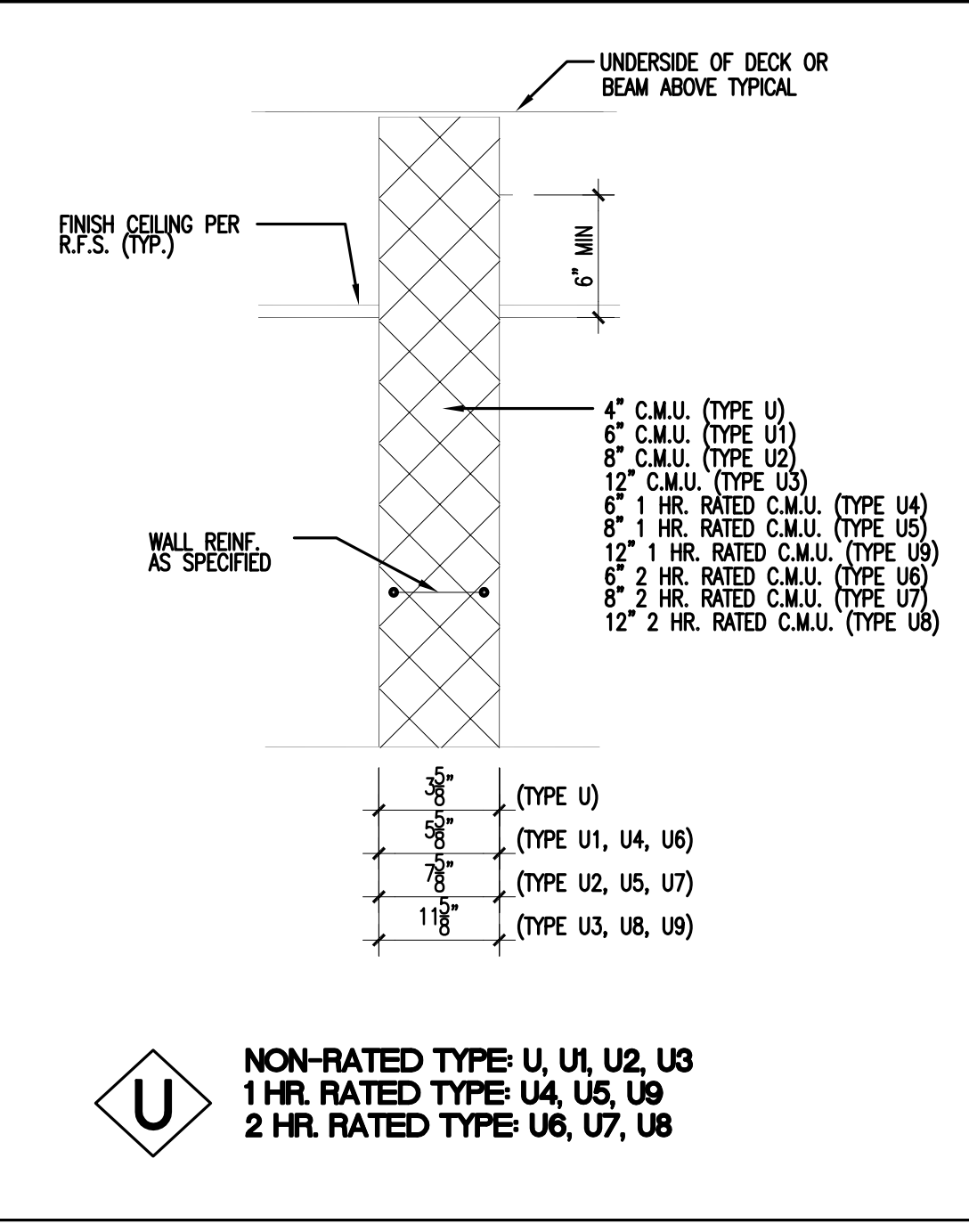
**A NON-RATED TYPES: A, A1, A2, A3, A4**



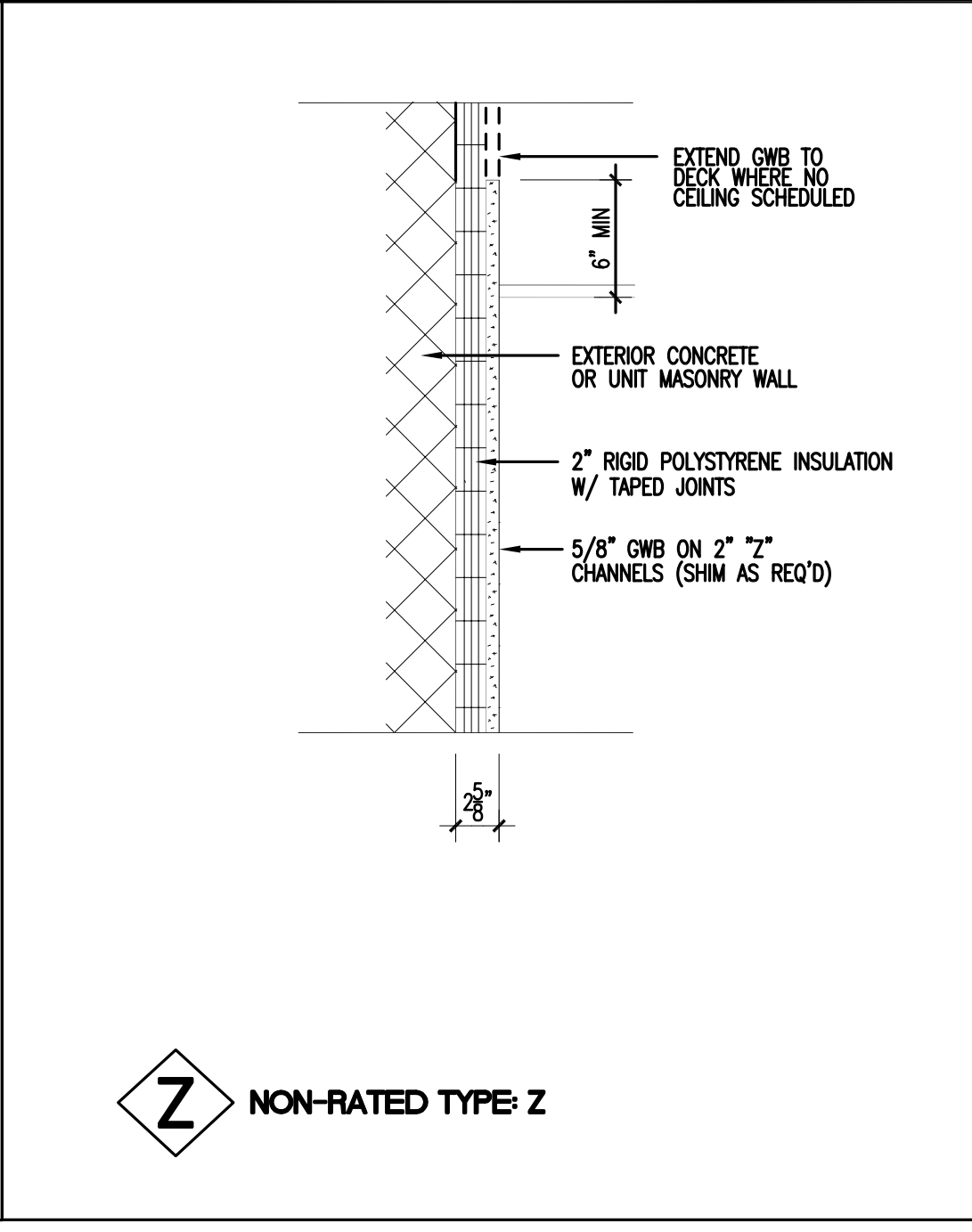
**L NON-RATED TYPES: L, L1, L2, L3**



**M NON-RATED TYPES: M, M1, M2, M3  
1 HR. U.L. DES. U465 TYPES: M4, M5, M6  
STC 49 GA FILE NO. WP 1076**



**U NON-RATED TYPE: U, U1, U2, U3  
1 HR. RATED TYPE: U4, U5, U6  
2 HR. RATED TYPE: U6, U7, U8**



**Z NON-RATED TYPE: Z**

ALL RIGHTS RESERVED. THIS DRAWING AND THE DESIGN SHOWN THEREON ARE COPYRIGHTED AS PRESCRIBED BY THE LAWS OF THE UNITED STATES AND ARE THE PROPERTY OF GMK ASSOCIATES ARCHITECTURAL DIVISION. ANYONE DUPLICATING, REPRODUCING OR CAUSING TO BE REPRODUCED THE WHOLE OR PART OF THESE DRAWINGS OR THE DESIGN THEREON WITHOUT PERMISSION OF THE ARCHITECT WILL BE SUBJECT TO LEGAL ACTION.

consultants



owner  
**UNIVERSITY OF SOUTH CAROLINA**  
USC CAMPUS PLANNING AND CONSTRUCTION  
743 GREENE STREET  
COLUMBIA, SOUTH CAROLINA 29208

project name  
**USC HORIZON GARAGE SHELL UPFIT**

A/E project number  
**12029.01**

seals/signature

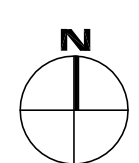
issued for  
**CONSTRUCTION DOCUMENTS**

date  
**SEPTEMBER 18, 2012**

number	item	date
1	ADDENDUM #3	07/16/2013

key plan

**HORIZON GARAGE**

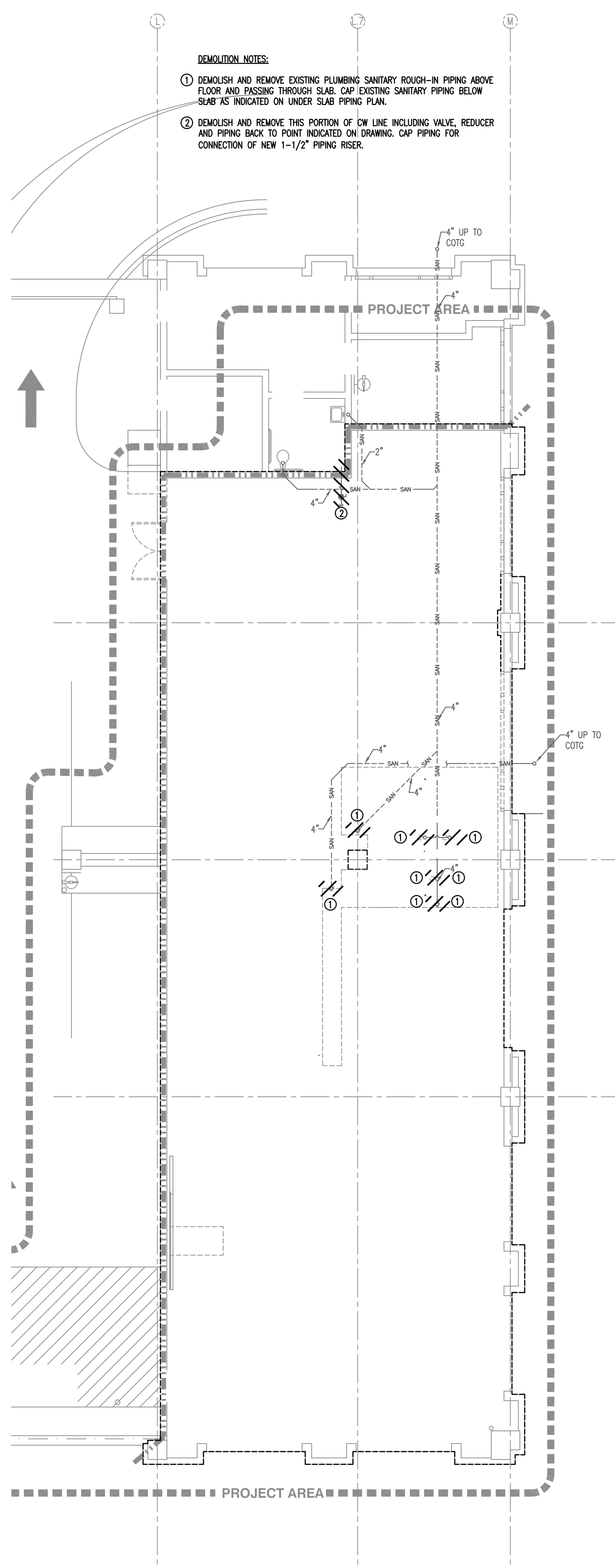


sheet title  
**PLUMBING PIPING PLANS**

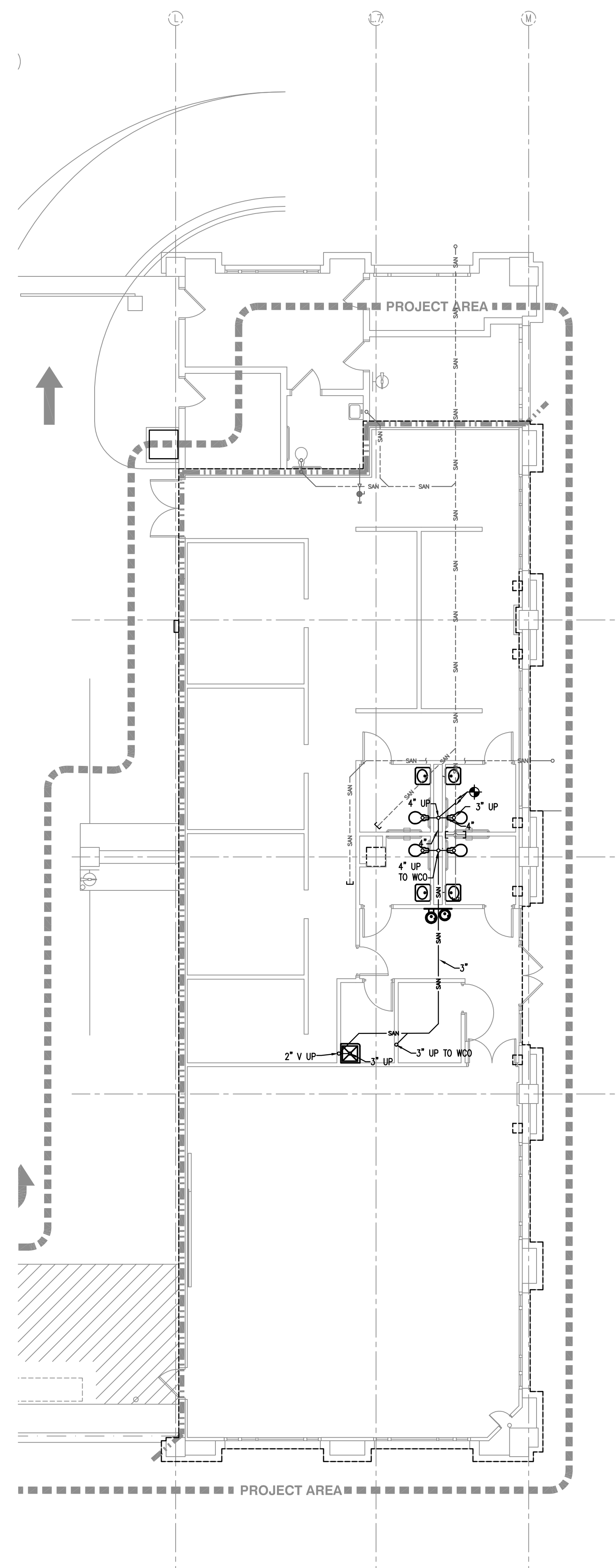
sheet number

**P2.1**

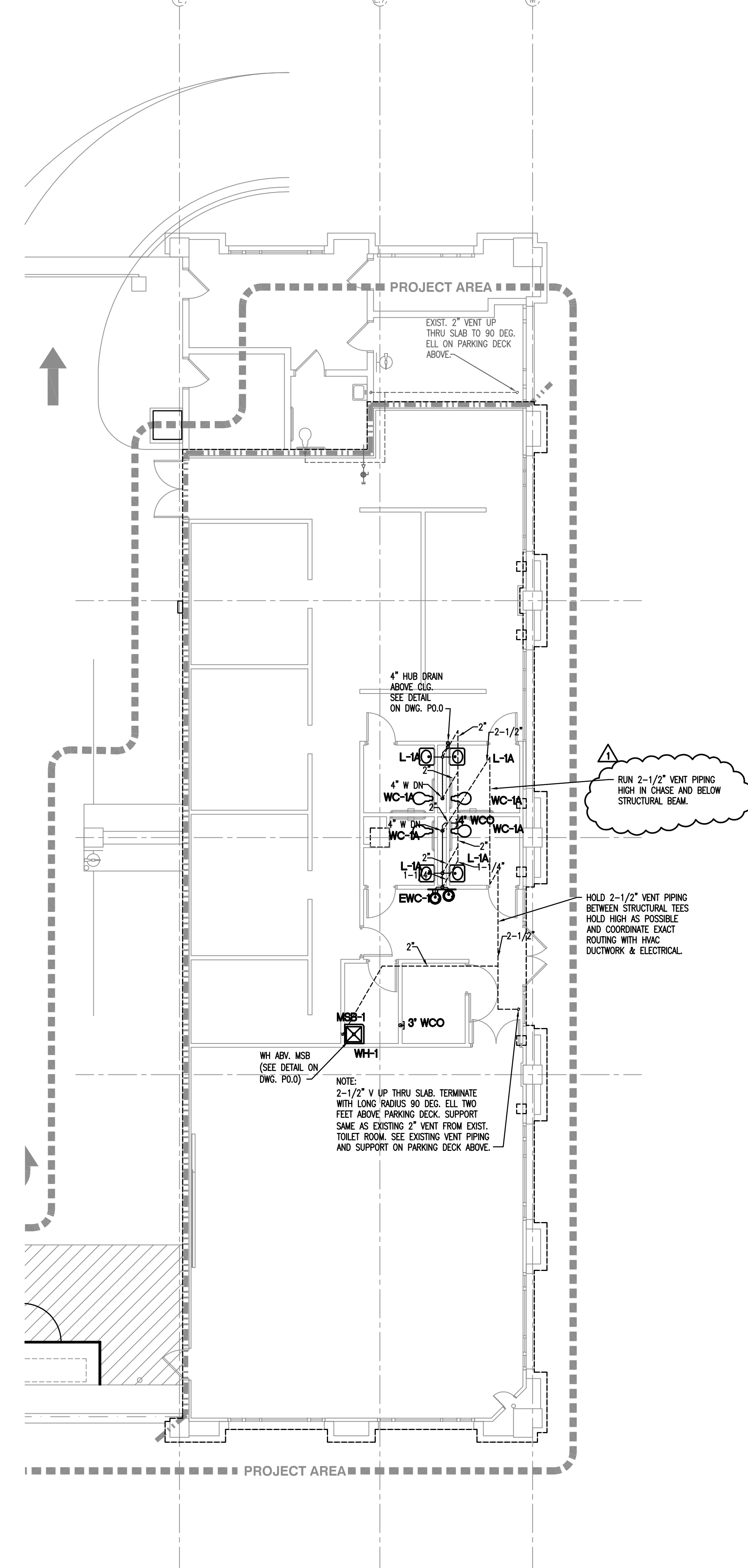
drawn by **RLW**  
checked by **JWB**



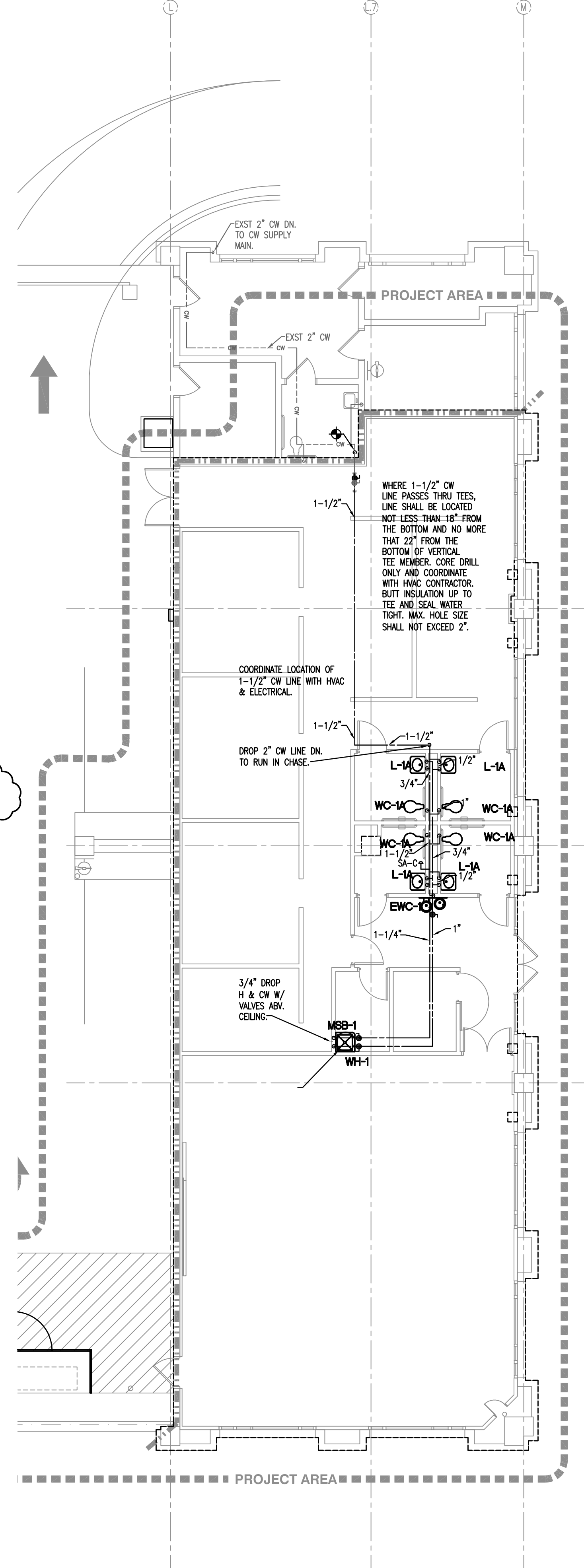
① PARTIAL SECOND FLOOR PLUMBING DEMOLITION PLAN  
1/8"=1'-0"



② PARTIAL SECOND FLOOR PLUMBING UNDER SLAB PIPING PLAN  
1/8"=1'-0"



③ PARTIAL SECOND FLOOR PLUMBING WASTE & VENT PIPING PLAN  
1/8"=1'-0"



④ PARTIAL SECOND FLOOR PLUMBING DOMESTIC WATER PIPING PLAN  
1/8"=1'-0"